

PFAS 분석을 위한 SPE 적층형 카트리지

One-step clean-up, faster, simpler, reliable recovery

Designed for
PFAS

phenomenex

PFAS 분석의 혁신적 솔루션, Strata 적층형 카트리지

Single SPE column 내에서 one-step으로 WAX 와 GCB clean-up을 동시에!!!

One step으로 약 35분 감소 기존 시험법 규정 준수 유지

SPE for
PFAS Analysis



SAMPLE TYPE
Water



WAX
GCB

- WAX phase on top
- GCB below

SAMPLE TYPE
Soils, Tissue, and Biota



GCB
WAX

- GCB on top
- WAX phase below

SAMPLE TYPE
polar compounds



Strata X-AW
GCB
Strata XL

- Better retention of **polar compounds** when compared to C8 and C18 silica

dispersive SPE



Graphite carbon

정전기 발생 → 입자 비산 & 주변 오염
흡습성 → 무게 측정 어려움
General Protocol 수동 과정 및
여러 단계 필요 → 오류 가능성 ↑

포장된 Strata 적층형 카트리지 SPE



Strata Stacked Cartridges

회수율 저하 없이 간섭 제거
필요에 따라 제형 및 형식, 분량 선택
Single SPE column 내에서 WAX 와
GCB clean-up 동시 가능 (**one step**)
단계 감소로 인한 속도 향상 및 오류 감소

미리 포장된 Strata Stacked Cartridges 를 사용하여 개별 GCB 무게 측정 대비 **더 높은 일관성** 확보

SPE for PFAS Analysis

Designed for
PFAS
phenomenex

Single SPE column 내에서 one-step으로 WAX 와 GCB clean-up을 동시에!!

Strata Stacked Cartridges Protocol

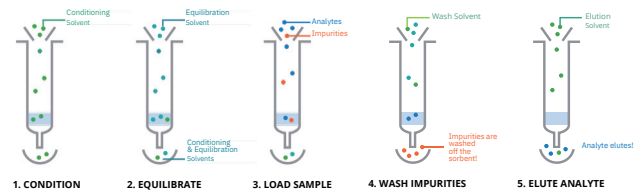
기존 SPE Protocol 외 추가 단계 필요 없음

- GCB 수동 추가 없음 (배치당 약 10분)
- 추가 원심분리 단계 제거 (10분)
- 추가 이송 단계 제거 (배치당 약 15분)

One step으로 약 35분 감소



SPE General Protocol



Order Guide



Designed for **Water** with a **WAX/GCB** format

WAX Specifications

Particle size (µm)	50
Surface Area (m ² /g)	600-800
Avg. Pore Size (Å)	70-90



Designed for **Soils, Tissue, and Biota** with a **GCB/WAX** format

GCB Specifications

Avg. particle size (mesh)	120-400
Surface Area (m ² /g)	600-800

Ordering Information

Product Name	Description	Part No.	Format	Unit
Stacked Strata WAX/GC				
Strata PFAS (WAX/GCB)	Designed to meet EPA 1633 requirements for sample cleanup from water samples with minimal GCB.	CS0-9218	200 mg/10 mg/6 mL	30/pk
Strata PFAS (WAX/GCB)	Designed to meet EPA 1633 requirements for water samples with increased GCB for extra cleanup.	CS0-9207	200 mg/50 mg/6 mL	30/pk
Strata PFAS (WAX/GCB)	Increased WAX and sold in a larger quantity.	CS0-9215	250 mg/50 mg/6 mL	200/pk
Strata PFAS (WAX/GCB)	Increased WAX phase and GCB for slightly dirty water samples and for larger volumes and extra capacity to trap low levels and improve detection of PFAS.	CS0-9208	500 mg/50 mg/6 mL	200/pk
Strata PFAS (WAX/GCB)	Increased WAX phase and GCB for slightly dirty water samples and for larger volumes and extra capacity to trap low levels and improve detection of PFAS.	CS0-9208-S	500 mg/50 mg/6 mL	30/pk
Strata PFAS (WAX/GCB)	Wider format for high particulate samples to minimize clogging.	CS0-9220	250 mg/100 mg/20 mL	20/pk
Stacked Strata GCB/WAX				
Strata PFAS (GCB/WAX)	Designed to meet EPA 1633 requirements for sample cleanup from soils, sediments that remove matrix before binding PFAS onto WAX material.	CS0-9219	10 mg/200 mg/6 mL	30/pk
Strata PFAS (GCB/WAX)	Designed to meet EPA 1633 requirements for extra sample cleanup from soils, sediments that remove matrix before binding PFAS onto WAX material.	CS0-9214	50 mg/200 mg/6 mL	30/pk
Strata PFAS (GCB/WAX)	Stacked combination for samples with high particulates to minimize clogging.	CS0-9221	100 mg/250 mg/20 mL	20/pk
Strata PFAS (GCB/WAX)	Increased GCB to remove high concentrations of Cholic acids (TDCA) and other bile salts.	CS0-9217	250 mg/100 mg/6 mL	30/pk
Stacked Strata X-AW				
Strata X-AW/Strata XL	Mix of phases to enhance extraction of anionic and neutral compounds from viscous, dirty water and soil eluates. Larger package size	CS0-9201	150 mg/150 mg/6 mL	200/pk
Strata X-AW/Strata XL	Mix of phases to enhance extraction of anionic and neutral compounds from viscous, dirty water and soil eluates.	CS0-9203	150 mg/150 mg/6 mL	30/pk